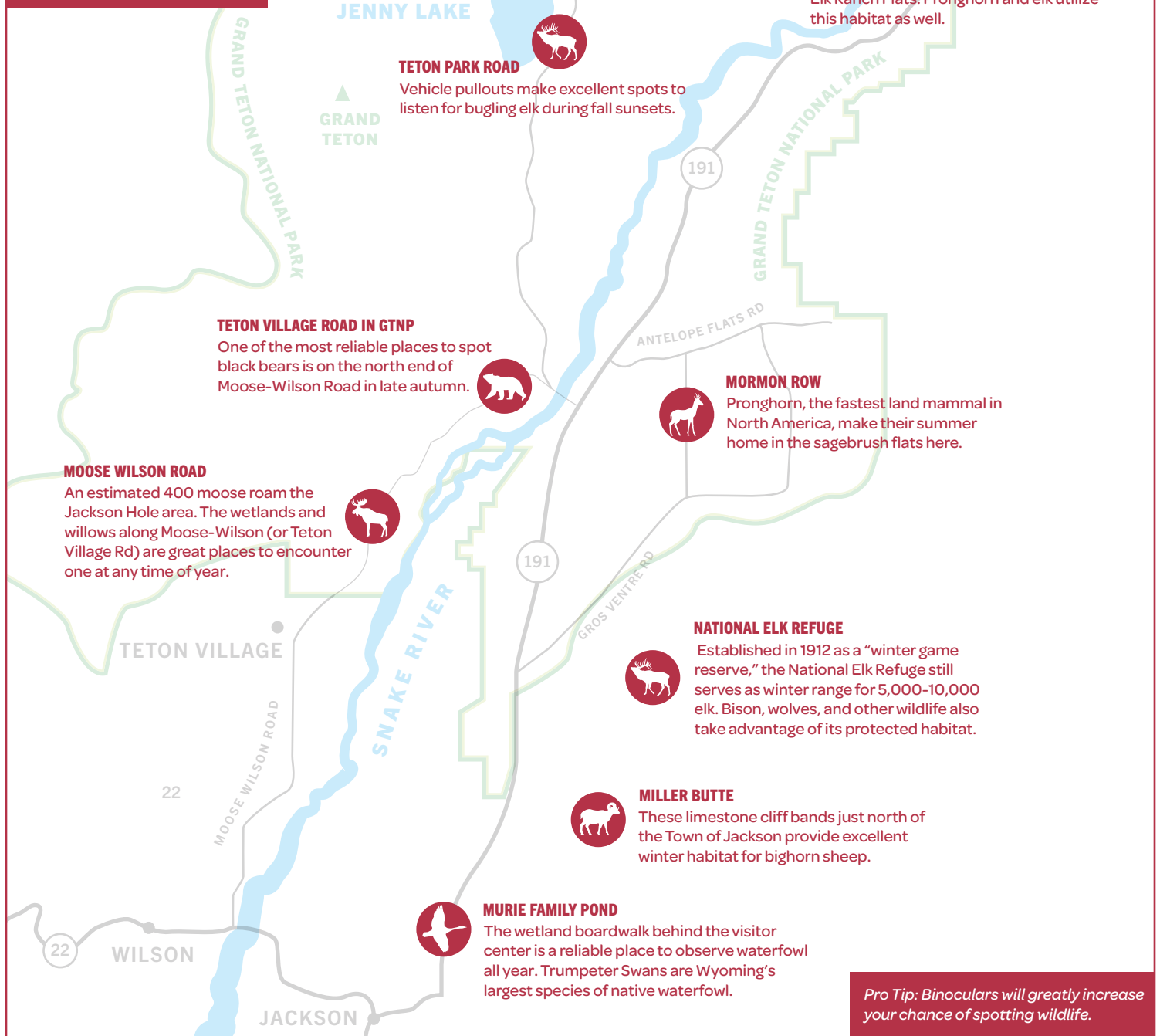


WHERE TO SPOT WILDLIFE

Give wildlife a brake!

- Help prevent costly and dangerous wildlife-vehicle collisions
- Expect wildlife on the road
- Drive the nighttime speed limits (45mph at night) in Grand Teton National Park
- Utilize high beams when visibility is low



WILLOW FLATS

Grab a coffee at Jackson Lake Lodge and scan this lakeside landscape for bear and elk from the overlooks above the willows.



JACKSON LAKE DAM

Members of the weasel family, river otters can sometimes be viewed here. Historically, otters were driven to near extinction in many parts of the Country and have made a remarkable recovery.



OSBOW BEND

Bald eagles often perch in trees on the far shore of this bend in the Snake River. Several species of waterfowl can often be seen here too.

26

ELK RANCH FLATS

During much of the year, large numbers of bison congregate in the open meadow of Elk Ranch Flats. Pronghorn and elk utilize this habitat as well.



JENNY LAKE

TETON PARK ROAD

Vehicle pullouts make excellent spots to listen for bugling elk during fall sunsets.



GRAND TETON

TETON VILLAGE ROAD IN GTNP

One of the most reliable places to spot black bears is on the north end of Moose-Wilson Road in late autumn.



ANTELOPE FLATS RD

MORMON ROW

Pronghorn, the fastest land mammal in North America, make their summer home in the sagebrush flats here.



MOOSE WILSON ROAD

An estimated 400 moose roam the Jackson Hole area. The wetlands and willows along Moose-Wilson (or Teton Village Rd) are great places to encounter one at any time of year.



NATIONAL ELK REFUGE

Established in 1912 as a "winter game reserve," the National Elk Refuge still serves as winter range for 5,000-10,000 elk. Bison, wolves, and other wildlife also take advantage of its protected habitat.



MILLER BUTTE

These limestone cliff bands just north of the Town of Jackson provide excellent winter habitat for bighorn sheep.



MURIE FAMILY POND

The wetland boardwalk behind the visitor center is a reliable place to observe waterfowl all year. Trumpeter Swans are Wyoming's largest species of native waterfowl.

Pro Tip: Binoculars will greatly increase your chance of spotting wildlife.